

ECO 105

Carton material	Folding boxboard (gsm)	Corrugated board
Straightline folding cartons	200–600	N-, F-, E-flute*
Lockbottom cartons	250–600	N-, F-, E-flute*
Collapsible boxes	250–600	N-, F-, E-flute*
Double-wall carton	200–600	N-, F-, E-flute*

* N-, F-, E-flute: carton sample is required

Space requirements

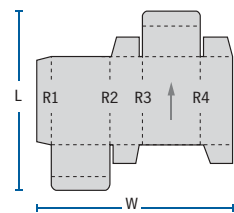
Length	12.80–14.85 m (41 ft. 12 in.– 48 ft. 9 in.)
Width	1.8 m (5 ft. 11 in.)
Weight (net)	6,450 kg (14,219.80 lbs)
Installed total capacity	21 kVA

1. Straightline folding cartons

W	66*–1,050 mm (2.6*–41.34 in.)
L (max.)	650 mm (25.59 in.)

Machine speed 400 m/min. (1,312 ft. 4 in./min.)

* with miniature carton attachment



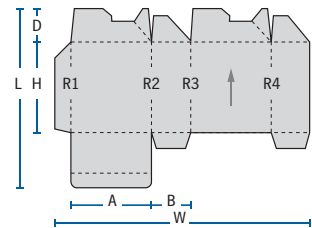
2. Lockbottom cartons

W	220–1,050 mm (8.66–41.34 in.)
L (max.)	650 mm (25.59 in.)
D (max.)	130 mm (5.12 in.)
H (min.)	75 mm (2.95 in.)

A (min.) 70 mm (2.76 in.)

B (min.) 36 mm (1.42 in.)

Output (max.) 35,000 pcs/h

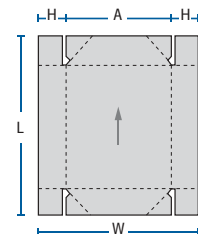


3. 4-corner collapsible boxes

W	190–1,000 mm (7.48–39.37 in.)
L	160–710 mm (6.3–27.95 in.)
A	130–890 mm (5.12–35.04 in.)

H 30–120 mm (1.18–4.72 in.)

Output (max.) 25,000 pcs/h

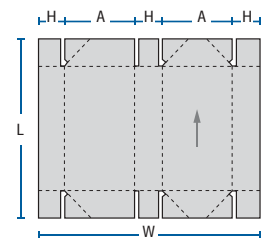


4. 6-corner collapsible boxes

W	350–1,000 mm (13.78–39.37 in.)
L	160–670 mm (6.3–26.38 in.)
A (min.)	130 mm (5.12 in.)

H 30–120 mm (1.18–4.72 in.)

Output (max.) 20,000 pcs/h



5. Double-wall carton

F	80–890 mm (3.15–35.04 in.)
L	85–650 mm (3.35–25.59 in.)
Z	150–930 mm (5.91–36.61 in.)

W (max.) 1,050 mm (41.34 in.)

E (min.) 20 mm (0.79 in.)

Machine speed 300 m/min. (984 ft. 3 in./min.)

